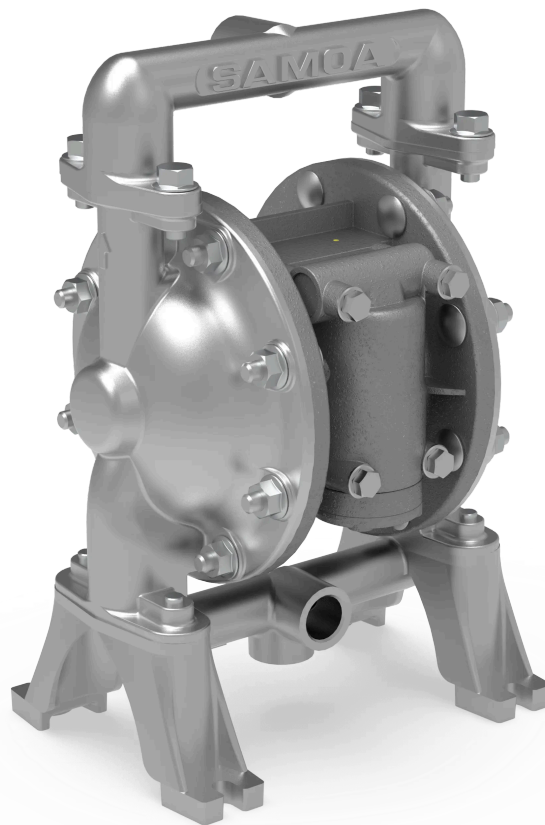




# DIAPHRAGM PUMP UE 1/2" SST-SANTOPRENE-SST ATEX



Part No  
UE05A-NSS-SSA-B0






## TECHNICAL DATA

### DIAPHRAGM PUMP UE 1/2" SST-SANTOPRENE-SST ATEX

SAMOA diaphragm pump - compressed air driven for stationary or portable use. Can run dry without damage and requires no electrical connection. Depending on the material selected, handles both clean, dirty, corrosive and abrasive liquids. Automatic start/s

TECHNICAL DATA	
Part No	UE05A-NSS-SSA-B0
Ratio	1:1
Type	Läckagedetektorer via optisk-elektriska sensorer
Capacity	54 l/min free flow
Air connection	1/4" (F) NPT
Maximum air pressure	0,8 (8) MPa (bar)
Inlet	1/2" (F) NPT
Outlet	1/2" (F) NPT
Seals	EPDM
Max suction height	8 m
Max particle size	2,5 (3/32") mm (inch)
Material pump body	Stainless steel (AISI 316)
Material diaphragm	Santoprene®
Material balls	Stainless steel (AISI 316)
Material ball valve seats	Stainless steel (AISI 316)
Certification	Ex II2 GD IIB/IIC 95 °C
Weight (Gross)	7 kg
H.S. Code	84138100

RELATED PRODUCTS

PART NO	DESCRIPTION	
UP05R-WP-S00	Seat kit 316 SST for UP05	
UP05R-AM-200	Air sensor kit for UP05	
UP05R-WP-0S0	Ball kit 316 SST for UP05	
UP05R-WP-99E	Seat O-ring kit EPDM for UP05	
UP05R-AM-1A0	Air motor kit for UP05A	
UP05R-WP-00A	Diaphragm kit Santoprene for UP05	